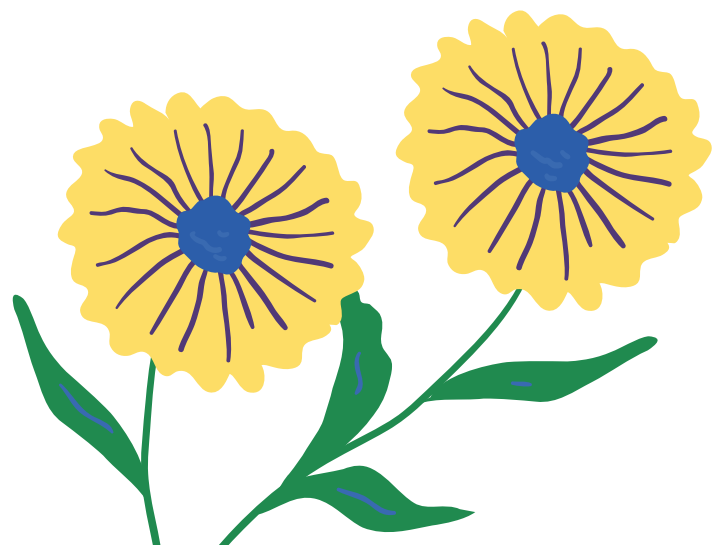


SPRING GARDENING CHECKLIST



1.

Clean-up Flower Beds



Rake leaves & old mulch.



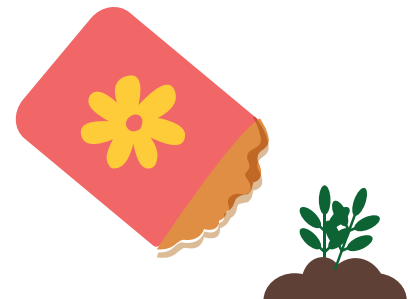
Edge Flower Beds & Push heaved plants back into flower beds.



Remove existing mulch to prepare the soil for a new layer



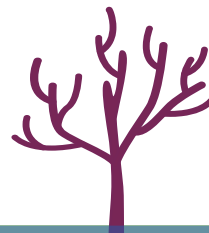
Fertilize shrubs and fruit trees in early spring before blooming begins.



Prune & Cut Perennials and Shrubs



Remove dead perennials and tree limbs.



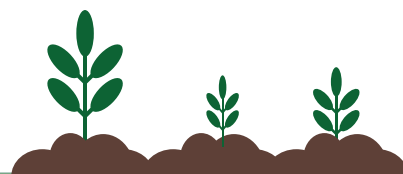
Prune perennials to promote new growth and direction



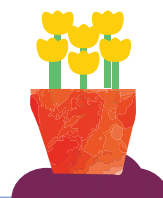
You will see your plant's live stems after a few weeks.



Transplant, and redistribute perennials to fill up open areas.



Wait for spring bloomers to flower before pruning and trimming (azaleas & rhododendron).



Add annual plants.



3.

Lay Down Mulch (2-3 inches thick)



Lay down fine shredded mulch that can easily integrate with the soil.



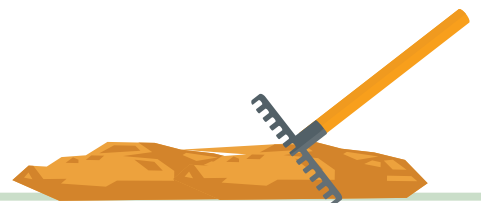
Don't skip this step because mulch is what maintains moisture, and prevents weed growth.



Get enough mulch because you'll usually need more than it seems.



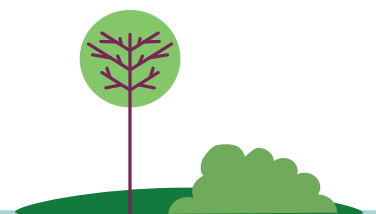
Spread the mulch and level it with the back of a metal rake to avoid bumps.



Use mulch creatively as a way to decorate and enhance your garden.



Always leave room around the trees, and shrubs for air circulation



If you prefer organic and chemical-free products, organic leaf mulch is strongly recommended.

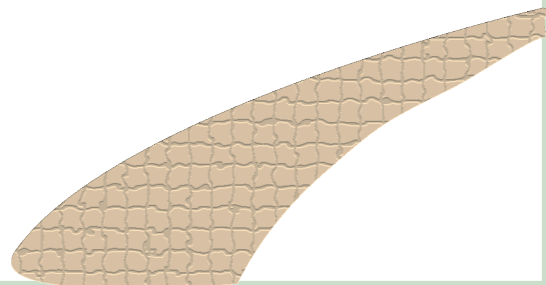


4.

Clean & Repair Hardscapes: Patios, Walkways, and Others



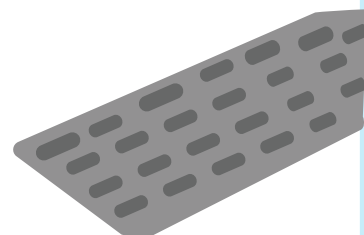
Add gravel to worn-out walkways and driveways.



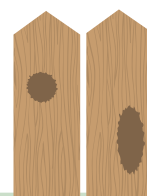
Repoint flagstone joints or add polymeric sand to patios and walkways made with pavers.



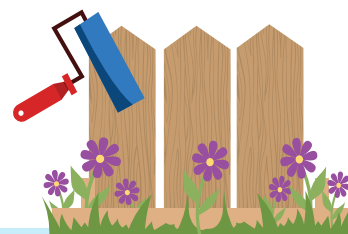
Readjust any loose pavers that might have gotten out of place during winter.



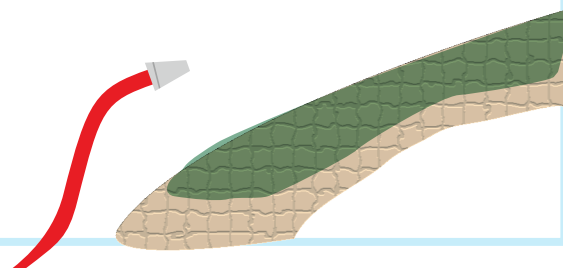
Replace, patch, or repaint worn wood.



Fence maintenance: scrape, paint, and check on loose, or rotten posts.



Eliminate slippery algae spots with a pressure washer.



5.

Ensure Your Irrigation System Works Properly



Flush out the system's pipes before turning on the water in May.



Consider getting an irrigation system with sensors to save on water.



Inspect Sprinkle Heads and check that they work properly.

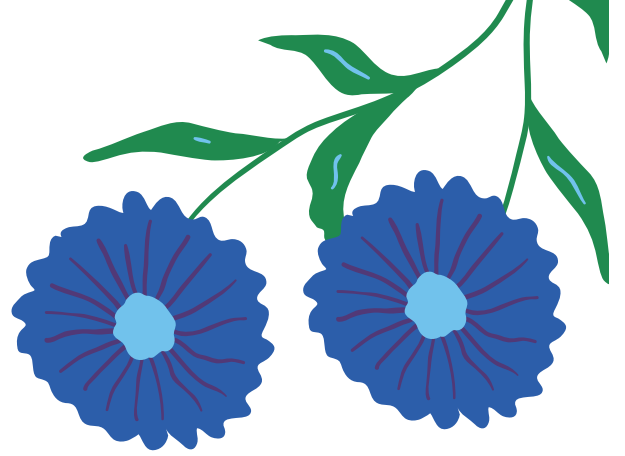


If drip irrigation lines have become loose, refasten them.

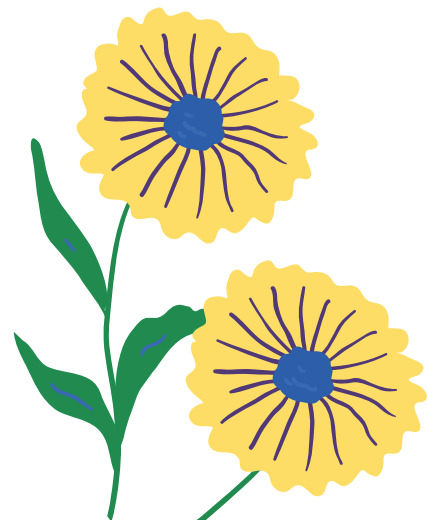


If you find damage, find a professional





Nauak Able Hands is Your One-Stop-Shop
for Landscaping, Hardscaping,
Home Improvements and Cleaning.
All Year Round!



Nauak
Able Hands
RESPONSIVE • RELIABLE • REASONABLY PRICED

 **781-819-3977**

 nauakablehands.com